

The background features a stylized illustration of two green trees with brown trunks on a light green hill. The trees are positioned on either side of the main text.

2025
East Side
Art Event Calendar

Brizlincote
Parish Council

Kianah Kavalla, Edge Hill Academy



January 2025

Mon	Tue	Wed	Thu	Fri	Sat	Sun
		1	2	3	4	5
6	7	8	9	10	11	12
13	14	15	16	17	18	19
20	21	22	23	24	25	26
27	28	29	30	31		

Sophie Broadhurst, Burton PRU



February 2025

Mon	Tue	Wed	Thu	Fri	Sat	Sun
					1	2
3	4	5	6	7	8	9
10	11	12	13	14	15	16
17	18	19	20	21	22	23
24	25	26	27	28		

Grace Histed,
Paulet High School



March 2025

Mon	Tue	Wed	Thu	Fri	Sat	Sun
					1	2
3	4	5	6	7	8	9
10	11	12	13	14	15	16
17	18	19	20	21	22	23
24	25	26	27	28	29	30
31						

Freya Lees,
Paulet High School



April 2025

Mon	Tue	Wed	Thu	Fri	Sat	Sun
	1	2	3	4	5	6
7	8	9	10	11	12	13
14	15	16	17	18	19	20
21	22	23	24	25	26	27
28	29	30				

Abdullah Muhammad, Burton PRU



May 2025

Mon	Tue	Wed	Thu	Fri	Sat	Sun
			1	2	3	4
5	6	7	8	9	10	11
12	13	14	15	16	17	18
19	20	21	22	23	24	25
26	27	28	29	30	31	

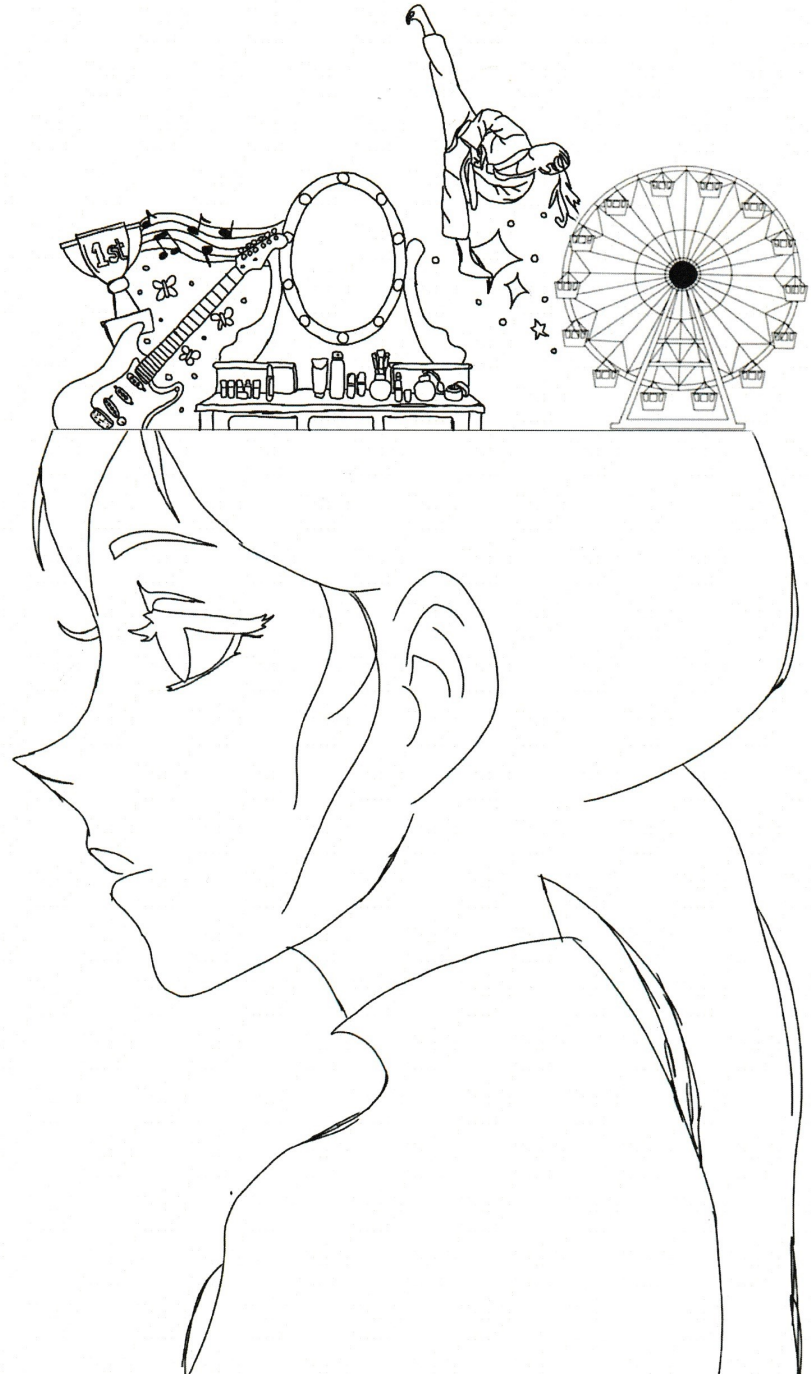


A pupil from
Tower View
Primary School

June 2025

Mon	Tue	Wed	Thu	Fri	Sat	Sun
						1
2	3	4	5	6	7	8
9	10	11	12	13	14	15
16	17	18	19	20	21	22
23	24	25	26	27	28	29
30						

**Euna Lugami,
Abbott Beyne School**



July 2025

Mon	Tue	Wed	Thu	Fri	Sat	Sun
	1	2	3	4	5	6
7	8	9	10	11	12	13
14	15	16	17	18	19	20
21	22	23	24	25	26	27
28	29	30	31			

Jessica Croucher,
Holy Rosary Catholic
Voluntary Academy



August 2025

Mon	Tue	Wed	Thu	Fri	Sat	Sun
				1	2	3
4	5	6	7	8	9	10
11	12	13	14	15	16	17
18	19	20	21	22	23	24
25	26	27	28	29	30	31

Chloe Rogers, Abbott Beyne School



September 2025

Mon	Tue	Wed	Thu	Fri	Sat	Sun
1	2	3	4	5	6	7
8	9	10	11	12	13	14
15	16	17	18	19	20	21
22	23	24	25	26	27	28
29	30					

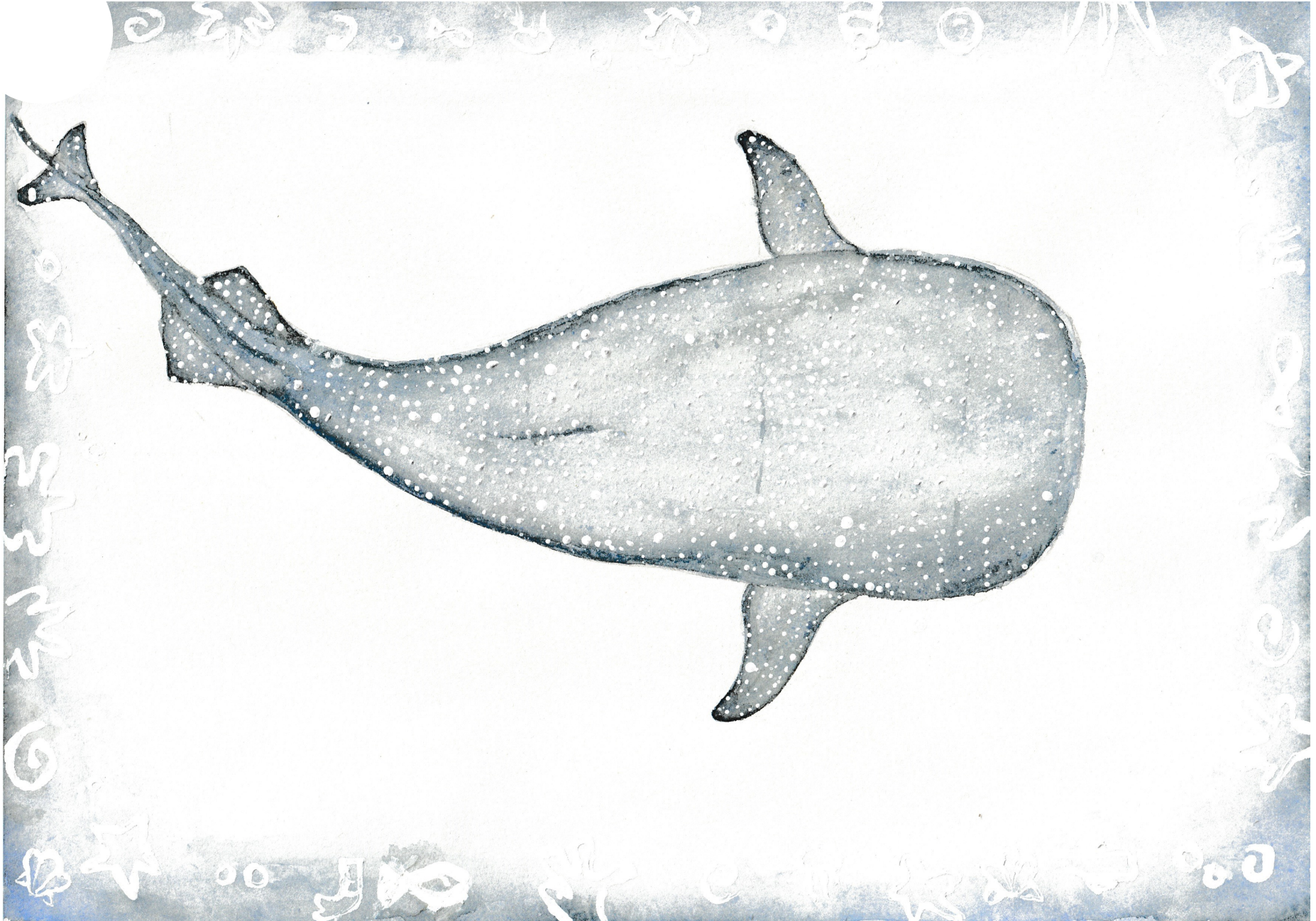


**Ruby-Rose Clarke,
Winhill Village
Primary School**

October 2025

Mon	Tue	Wed	Thu	Fri	Sat	Sun
		1	2	3	4	5
6	7	8	9	10	11	12
13	14	15	16	17	18	19
20	21	22	23	24	25	26
27	28	29	30	31		

Leni Mercer, Blessed Robert Sutton Catholic Voluntary Academy



November 2025

Mon	Tue	Wed	Thu	Fri	Sat	Sun
					1	2
3	4	5	6	7	8	9
10	11	12	13	14	15	16
17	18	19	20	21	22	23
24	25	26	27	28	29	30

**Ellie Taylor,
Blessed Robert Sutton
Catholic Voluntary Academy**



December 2025

Mon	Tue	Wed	Thu	Fri	Sat	Sun
1	2	3	4	5	6	7
8	9	10	11	12	13	14
15	16	17	18	19	20	21
22	23	24	25	26	27	28
29	30	31				

Brizlincote Parish Council Climate Change Leaflet

WATER SAVING TIPS

- Make sure you have a full load in the washing machine/dishwasher.
- Use a bowl when washing fruit & veg, and use the water to water the garden and houseplants.
- Spend less time in the shower (save electricity too!)
- Turn off the tap when brushing your teeth
- Keep a jug of water in the fridge for cool drinks

RECYCLE-REDUCE-REUSE

Please recycle as much as you can to reduce our Carbon Footprint.

As we know, plastic is the most concerning to the environment. But if we recycle our waste in the bins we have it will be one way of making a difference.



TIPS FOR SAVING ELECTRICITY

- Keep the fridge/freezer full
- Turn off lights when rooms are not in use
- Wash clothes at a lower temperature
- Only boil enough water for the amount you need
- Change to LED light bulbs
- Dry washing outside when possible

TIPS FOR SAVING GAS

- Keep heating systems well maintained
- Turn down the thermostat
- Make sure your home has sufficient loft and wall insulation

Food Waste

We could all try to make a small compost container for some of our household food waste.

To make a compost container, you need a small container with a lid, a small amount of soil, and some DRY carbon-based material like old newspaper.

Start by drilling some holes into the lid, then place a layer of soil into the bottom of the container.





Next, top up with dry shredded newspaper, then add the kitchen scraps.



The dry material helps to keep the balance of wet and dry in your compost and stops it smelling. Seal the lid and leave it to work its magic!! In 6 weeks or so you will have your own compost.

We as a Parish Council encourage the residents of Brizlincote to help reduce our Carbon Footprint. Brizlincotes average Carbon Footprint per household is **17.7t CO2e**

Lets make some small changes and see if we can reduce this in 2023



Brizlincote
Parish Council